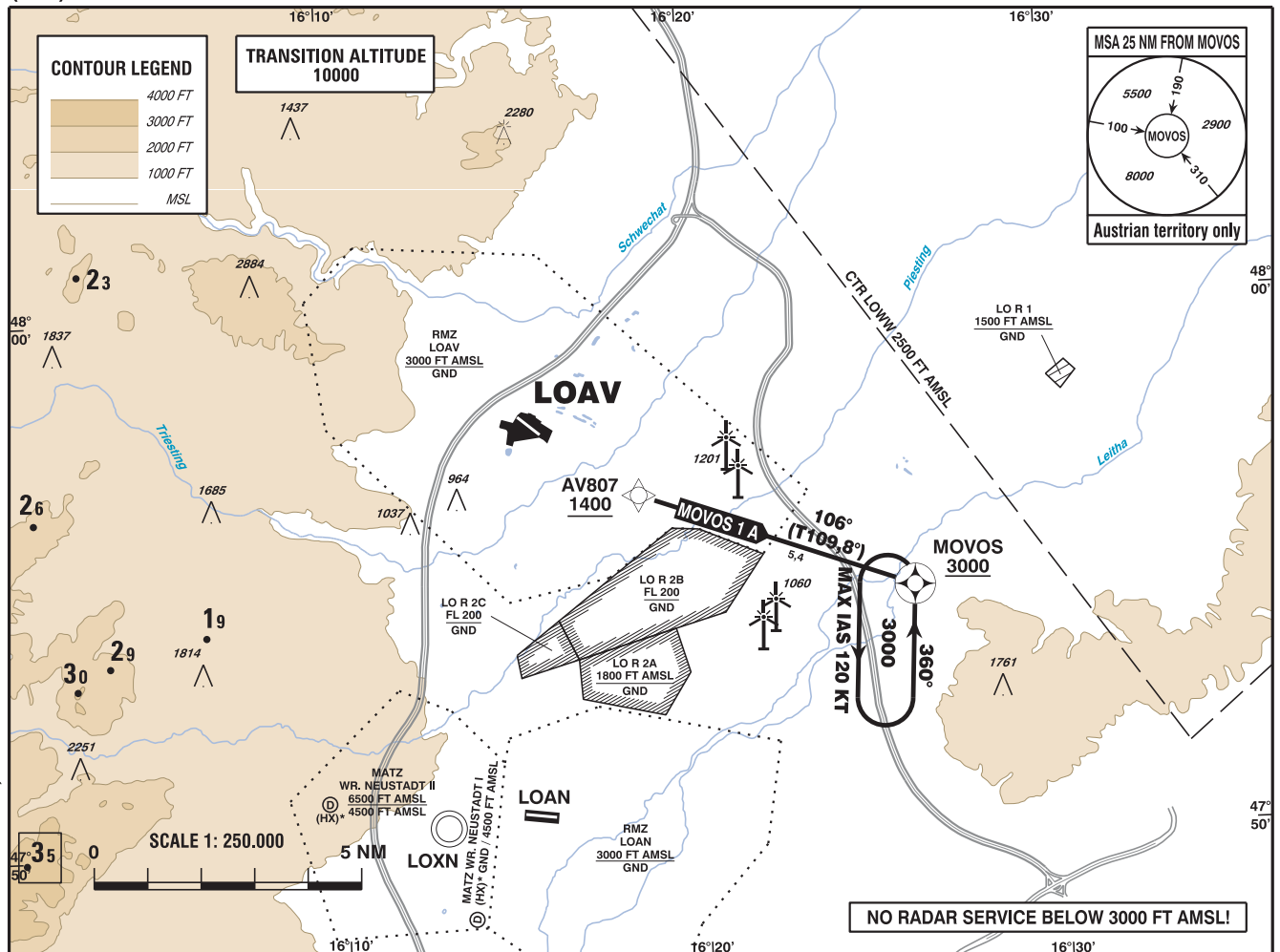


**STANDARD DEPARTURE
CHART - INSTRUMENT
(SID) - ICAO**

VAR 4° E

DELIVERY	118.230 MHZ
WIEN RADAR	134.675 MHZ
TFI	118.525 MHZ
VÖSLAU AD	118.605 MHZ

VÖSLAU
ÖSTERREICH AUSTRIA



CHANGE: AD FRQ.; EDITORIAL

- GNSS required
- RNAV 1 or P-RNAV approval required

BEARINGS AND TRACKS
ARE MAGNETIC
TRACKS IN BRACKETS
ARE TRUE
ALTITUDES, ELEVATIONS
AND HEIGHTS ARE IN FEET
DISTANCES ARE IN NM

Departing from LOAV only allowed as VFR flight,
IFR starts, when passing AV807 and 1400 FT AMSL or above

IFR procedure partly within airspace class G

Operating as IFR flight along SID subject to ATC clearance

Obtain clearance on FRQ 118.230 MHZ

Flights shall comply with the rules of RMZ and contact ATC
when passing AV807

Designator	Route	After Take-Off		Remarks
		Climb to ..initially	Expect FREQ	
MOVOS 1 A Movos one alfa departure	AV807 - MOVOS	By ATC	WIEN RADAR 134.675 MHZ	Climb gradient at least 4,9% (300 FT/ NM).

Contact WIEN RADAR when passing AV807

RNAV SID Coding Table of MOVOS 1 A

Path Terminator	Waypoint			Course/Track ° MAG (° True)	DIST NM	Turn Direction	Constraints		Navigation Specification	Remarks
	Identifier	Flyover	Coordinates				Level	Speed		
IF	AV807		N475631.21 E0161838.45				A1400+		RNAV 1	
TF	MOVOS	yes	N475440.60 E0162614.08	106° (109.8°)	5.4		A3000+		RNAV 1	

RNAV Holding

Holding Point	Inbound Track ° True	Inbound Track ° MAG	Turn Direction	MAX IAS	Minimum Holding Altitude FT MSL / FL	Time	DIST NM	Remarks
MOVOS	003.6°	360°	left	K120-	A3000	1 MIN		